



NEOFORMAS

P A R A C O N C R E T O

CATÁLOGO
TÉCNICO



NEO ALUFORM

O sistema NEO ALUFORM é composto por painéis fabricados com perfis extrudados (Liga 6061 e 6351 T6) com espessura de 3,5mm e com chapas de alumínio (Liga 5052 H34) com espessuras de 4,0mm em sua face de concretagem, garantindo um ótimo acabamento; além de serem leves e duráveis. Recomendado para construção de casas e edifícios, sem limite de pavimentos.

- Fabricado sob medida de acordo com o seu projeto.
- Ciclos diários de concretagem.
- Altos ganhos de produtividade em relação à construção com método convencional.
- Treinamento e capacitação técnica in loco.
- Fechamentos para janelas e portas.
- Paredes, laje e escada concretadas monoliticamente (em uma única etapa).
- Ótimo acabamento para execução da textura/pintura.
- Minimização de mão de obra, materiais e tempo.
- Produtividade de 5,62m²/hora/homem.
- Peso: 21,76 Kg/m²
- Largura: Modulação com painéis de 10 a 60cm.
- Altura: Conforme projeto do cliente, sendo cada painel limitado a 2,40m.

1. ALÇA

Para uma pegada rápida e segura.

2. PINO

Utilizado para a união dos painéis de alumínio.

3. CUNHA

Utilizada para maior fixação e travamento dos pinos.

4. ESPAÇADOR

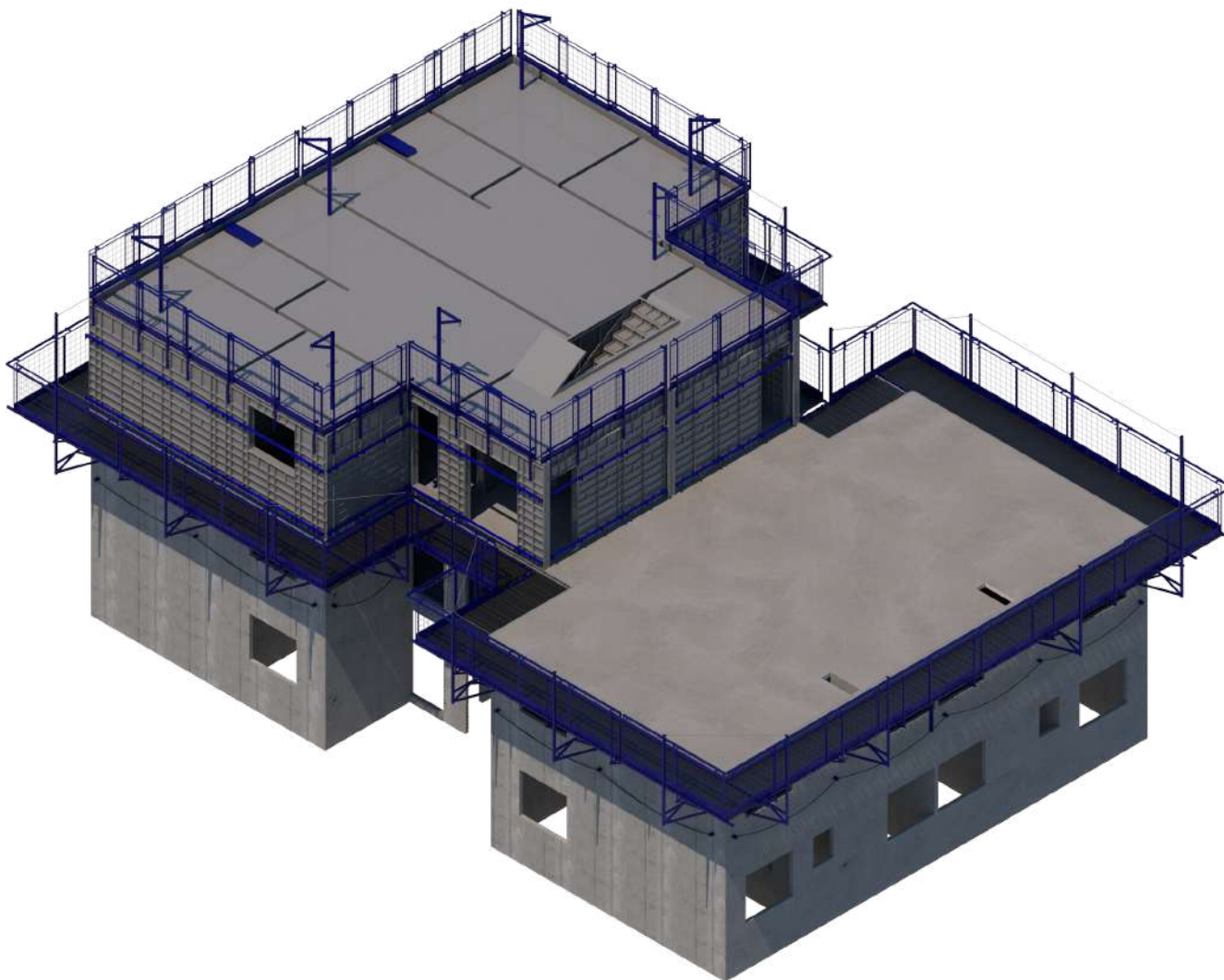
Utilizado para gabaritar a espessura das paredes, conforme a solicitação do projeto.

5. TRAVESSA

Mais ampla para maior rigidez, combatendo a deflexão.



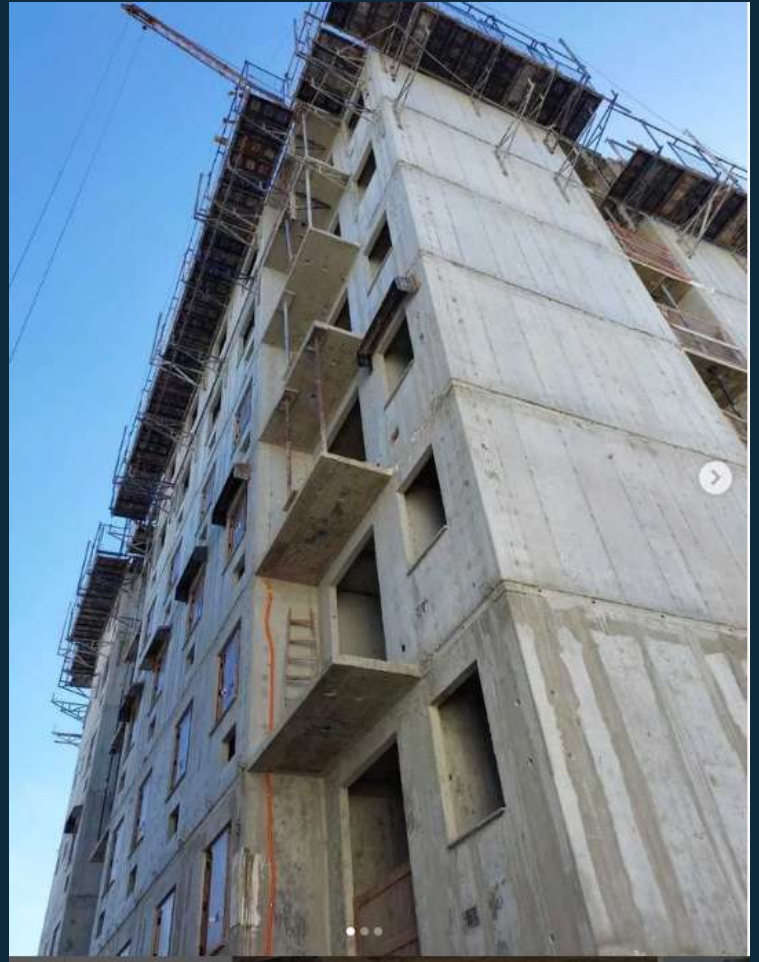
5



- Montagem manual, sem necessidade de equipamentos e mão de obra especializada.
- Treinamento e capacitação técnica inclusos.
- Paredes, laje e escadas concretadas monoliticamente (em uma única etapa).

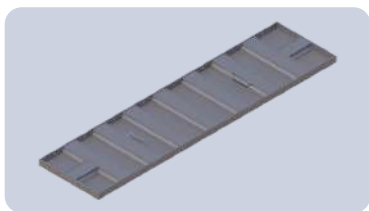
A NEO FORMAS aceita financiamento via BNDES através do FINAME (código 3056596) e cartão BNDES.



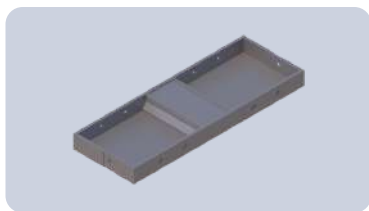




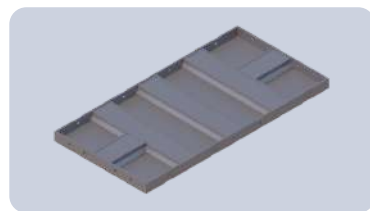
FORMAS



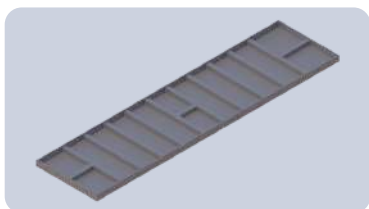
Painel de Parede



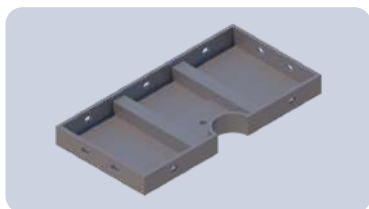
Painel de Bandeira



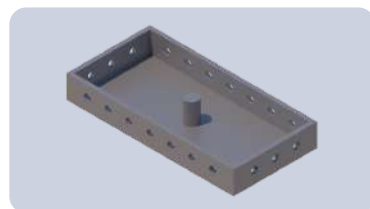
Painel de Peitoril



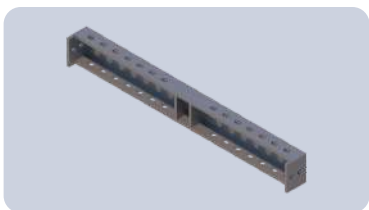
Painel de Laje



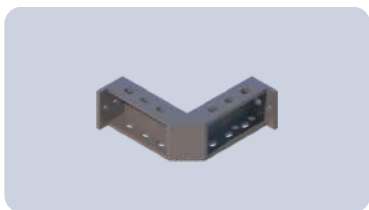
Painel de Laje para Linha Vida



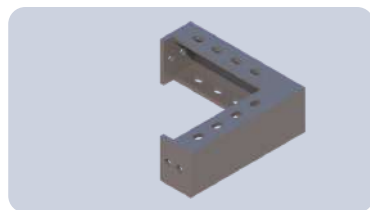
Painel de Escoramento



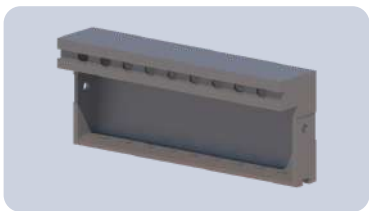
Painel de Ciclo



Canto Externo de Ciclo



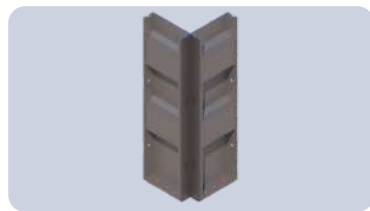
Canto Interno de Ciclo



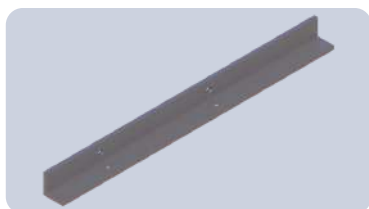
Canto da Laje



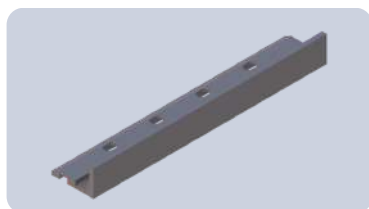
Canto da Parede Interno



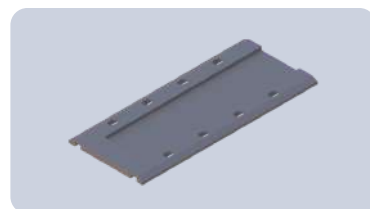
Canto da Parede Externo



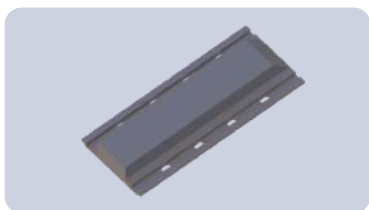
Cantoneira de Forma



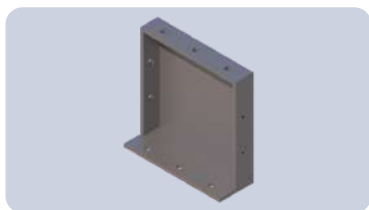
Fechamento de Passagem de Tela



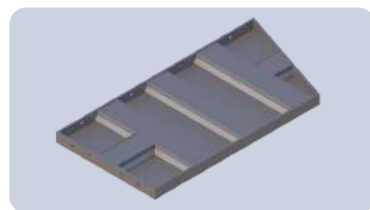
Fechamento de Parede Liso



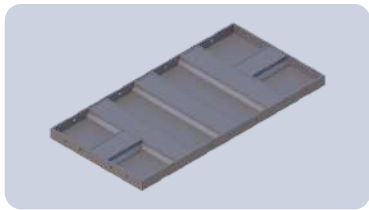
Fechamento com Negativo



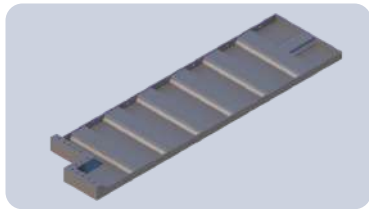
Painel com Recuo Horizontal



Painel de Oitão



Painel de Platibanda



Painel de Escada





SISTEMA DE SEGURANÇA

Linha de Vida de Laje

Linha de Vida de Parede

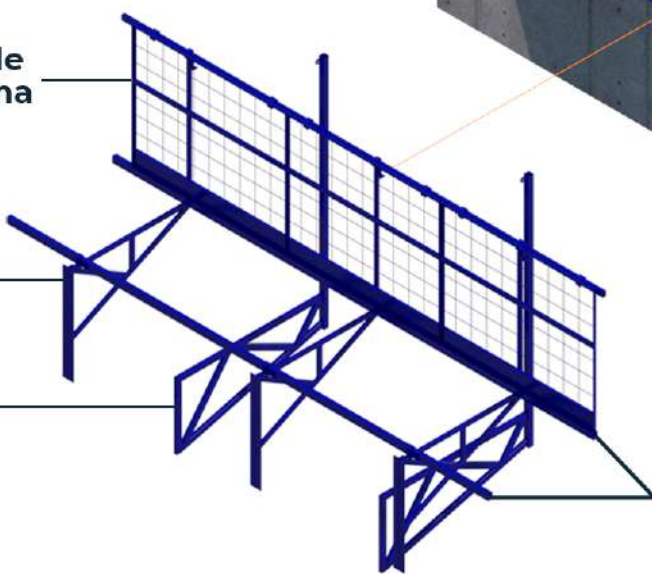


Tela de Plataforma

Plataforma

Linha de Vida de Plataforma

Trilho de Piso



SISTEMA DE SEGURANÇA



Plataforma de Trabalho Padrão



Plataforma de Trabalho sem Guarda Corpo



Plataforma de Trabalho para Janela



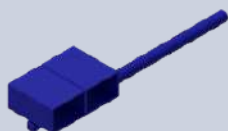
Plataforma de Trabalho para um Trilho de Piso



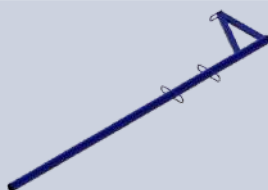
Plataforma de Trabalho Fixa no Tirante



Plataforma de Trabalho com Guarda Corpo Lateral



Linha da Vida de Parede



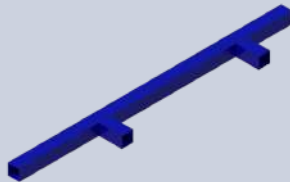
Haste da Linha da Vida da Laje



Base da Linha da Vida da Laje



Linha da Vida de Plataforma



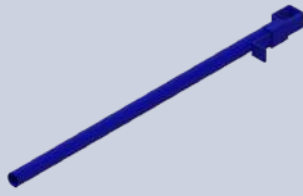
Suporte de Linha de Vida para Janela



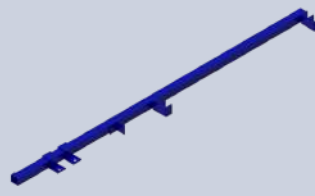
Suporte de Plataforma para Laje



Suporte de Guarda Corpo de Concretagem em "T"



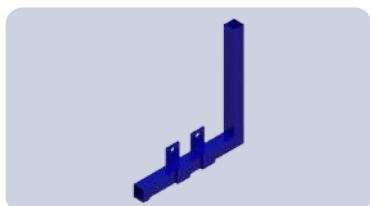
Guarda Corpo da Plataforma



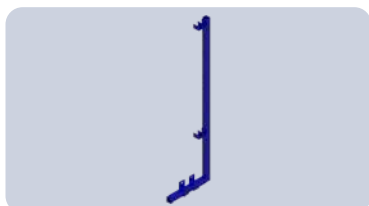
Guarda Corpo de Plataforma



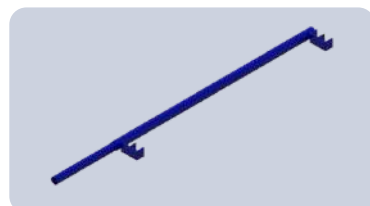
SISTEMA DE SEGURANÇA



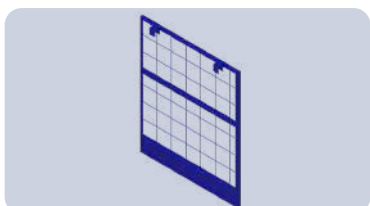
Suporte de Guarda Corpo de Concretagem em "L"



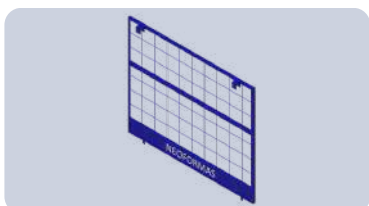
Guarda Corpo de Concretagem em "L"



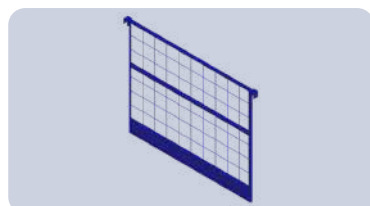
Guarda Corpo de Concretagem sem Ajuste



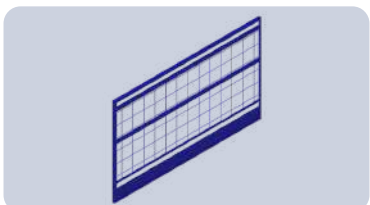
Tela de Fechamento



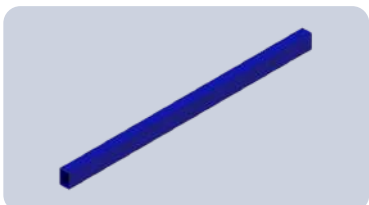
Tela de Plataforma



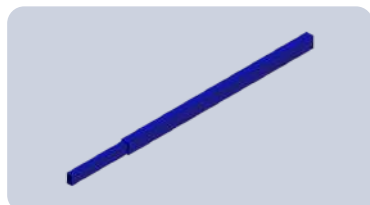
Tela de Plataforma com Garra Lateral



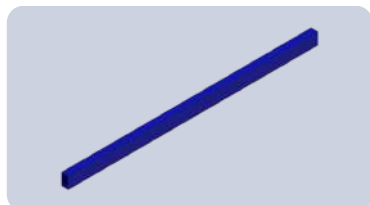
Tela de Concretagem



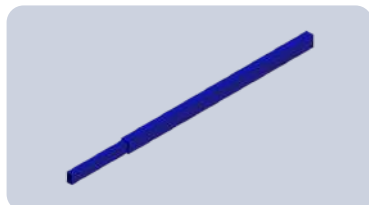
Trilho de Tela 5x3cm



Trilho de Tela 5x3cm com Luva



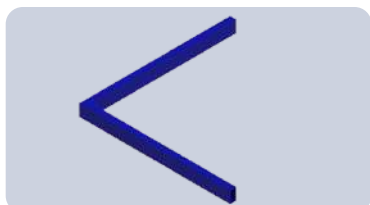
Trilho de Piso 6x4cm



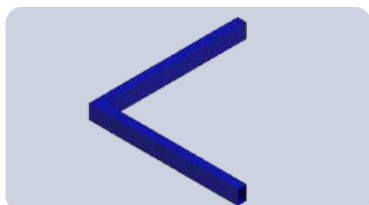
Trilho de Piso 6x4cm com Luva



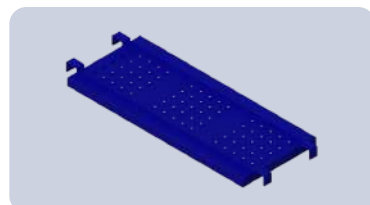
Suporte de Guarda Corpo de Plataforma para Trilho de Piso



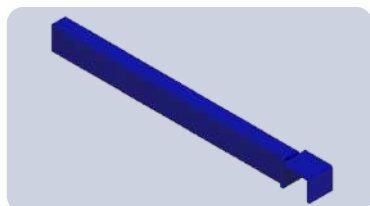
Luva para Quina de Trilho de Tela 4x2cm



Luva para Quina de Trilho de Piso 5x3cm



Piso Metálico



Luva com Garra para Trilho de Piso



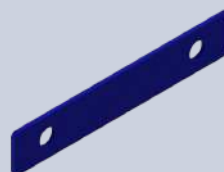
ACESSÓRIOS E FERRAMENTAS



Pino



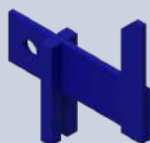
Cunha



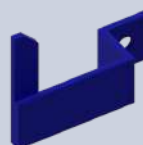
Espaçador Dois Furos



Espaçador Três Furos



Suporte de Alinhador



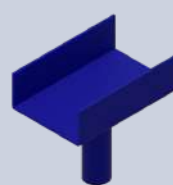
Suporte de Esquadro



Alinhador



Esquadro



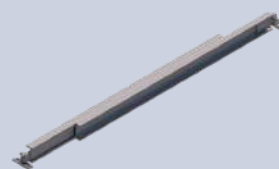
U de Escora



Aprumador



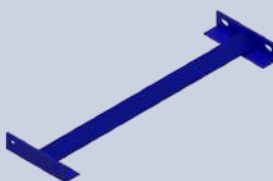
Escora de Aço



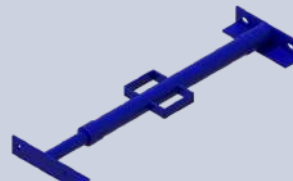
Viga Telescópica



Aprumador de Base



Trava de Porta Fixo



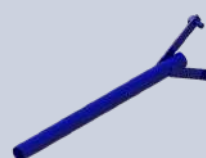
Trava de Porta Ajustável



Saca Canto de Laje



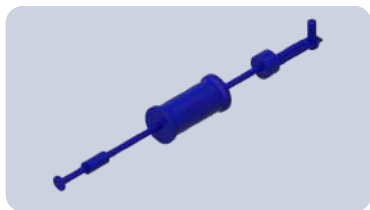
Espina 3/8"



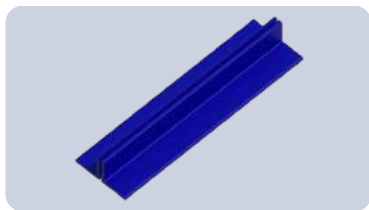
Saca Forma



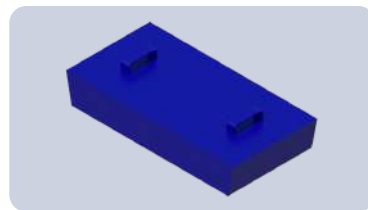
ACESSÓRIOS E FERRAMENTAS



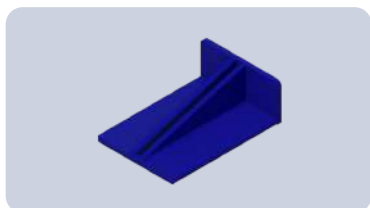
Saca Espaçador



Cantoneira de Geminação



Shaft



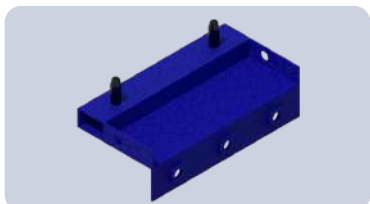
Trava de Espaçador



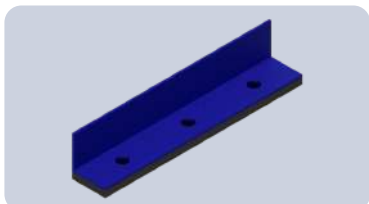
Cone de Painel de Ciclo



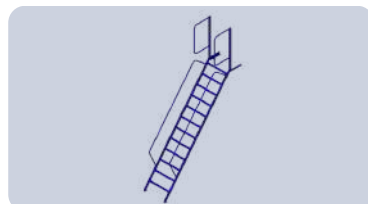
Porta Borboleta



Junta de Concretagem Horizontal



Cantoneira de Aço com Borracha

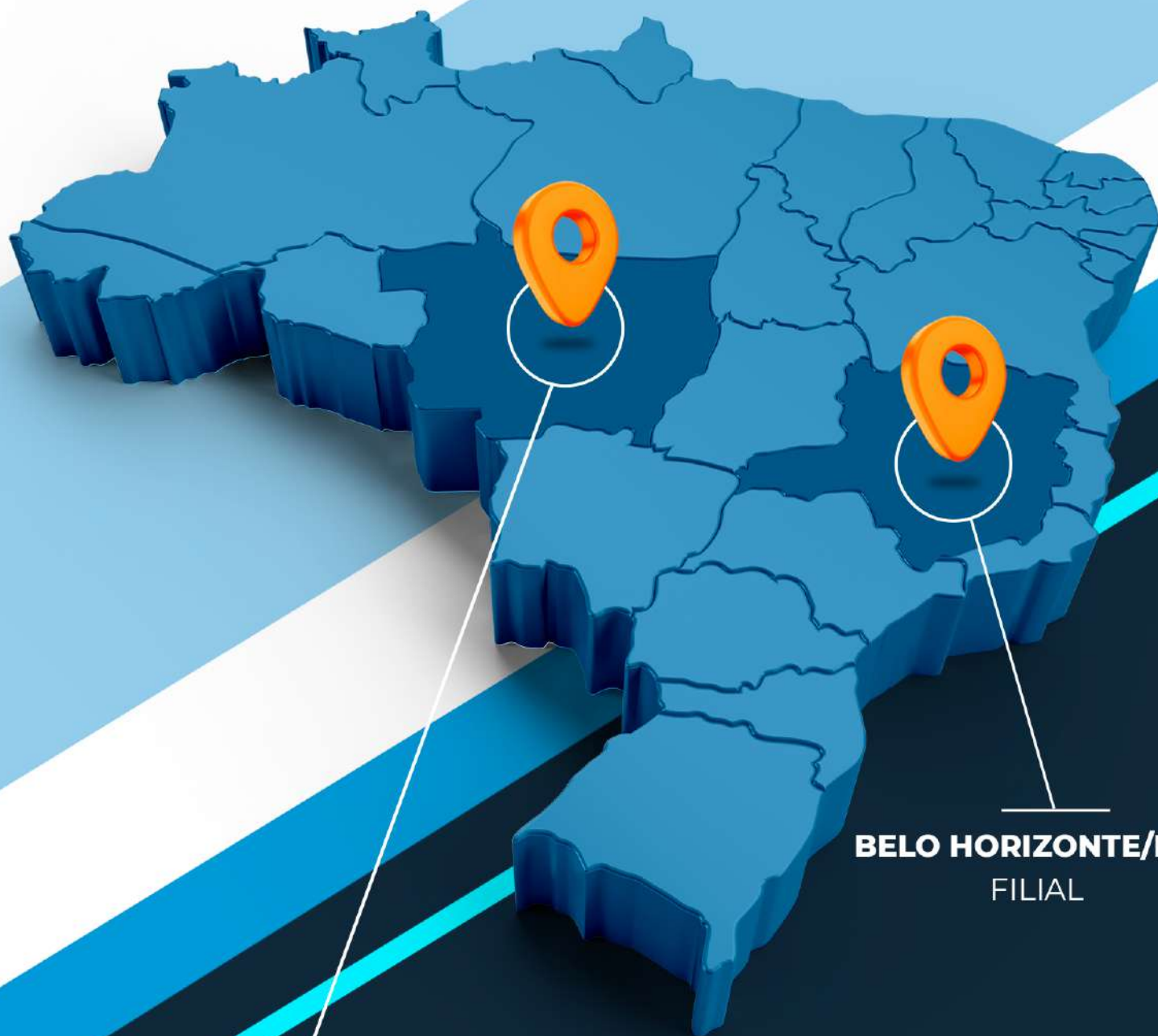


Escada Marinheiro



Banco de Montagem





CUIABÁ/MT
FÁBRICA

BELO HORIZONTE/MG
FILIAL

 **NEOFORMAS**
PARA CONCRETO
(31) 98263-7232